

The new standard for variable printing on flexible packaging materials



Model 55sst shown with PR5 and control box

The 55sst features:

- Super Speed Thermal Transfer Printing
- User-definable Multi-level Password Protection
- Three User Interface Choices—Two with Full-Color Displays
- Superior Graphics Resolution
- Quickest Conversion from Intermittent to Continuous Motion Operation

Become More Flexible and Efficient:

- Multiple interface options include an easy-to-use handset device that brings the controls to the operator's level
- Software-enabled "Instant Change" option provides quick and easy change from continuous to intermittent motion
- Patented ribbon management system provides better acceleration response, better registration, and less wear and tear on motors

Achieve High Resolution Print Quality:

- Print high resolution, high quality images at 300 dpi, (12 dots per mm) both horizontally & vertically
- Unlimited choice of font styles and a wide range of sizes
- Text and graphics are fully scalable

Increase Profits:

- Consistently clear imprints allow flexibility and reduce inventory of pre-printed films
- Printing speeds meet production requirements
- Complete product traceability with real time/date coding
- Reliable performance and minimal maintenance improve the bottom line

55sst Specifications

Print Engine

Height	7.16", 182mm
Width	7.9", 203mm
Depth	7.6", 192mm
Weight	18 lbs, 8 kg

Control Unit

Height	6.49", 165mm
Width	9.3", 237mm
Depth	3.6", 92mm

Electrical Standard

110/220/240V 50/60Hz 400 Watts
CE Certified

Air Supply/consumption

Typical CFM at recommended pressure:

Intermittent Motion:	.25 cfm (6 lpm)
40-60 psi (0.25-0.4 Mpa)	
Continuous Motion:	.25 cfm (6 lpm)
75-90 psi (0.5-0.6 Mpa)	

Print Area

Intermittent Motion:

Width	2.05" (52mm)
Length	3.15" (80mm)

Continuous Motion:

Width	2.05" (52mm)
Length	4.92" (125mm)

Printhead Dot Density

12 dots/mm (300 dpi) horizontally and vertically

Print Speed Production

Intermittent Motion:

Up to 400mm per second*

Continuous Motion:

Up to 900mm per second*

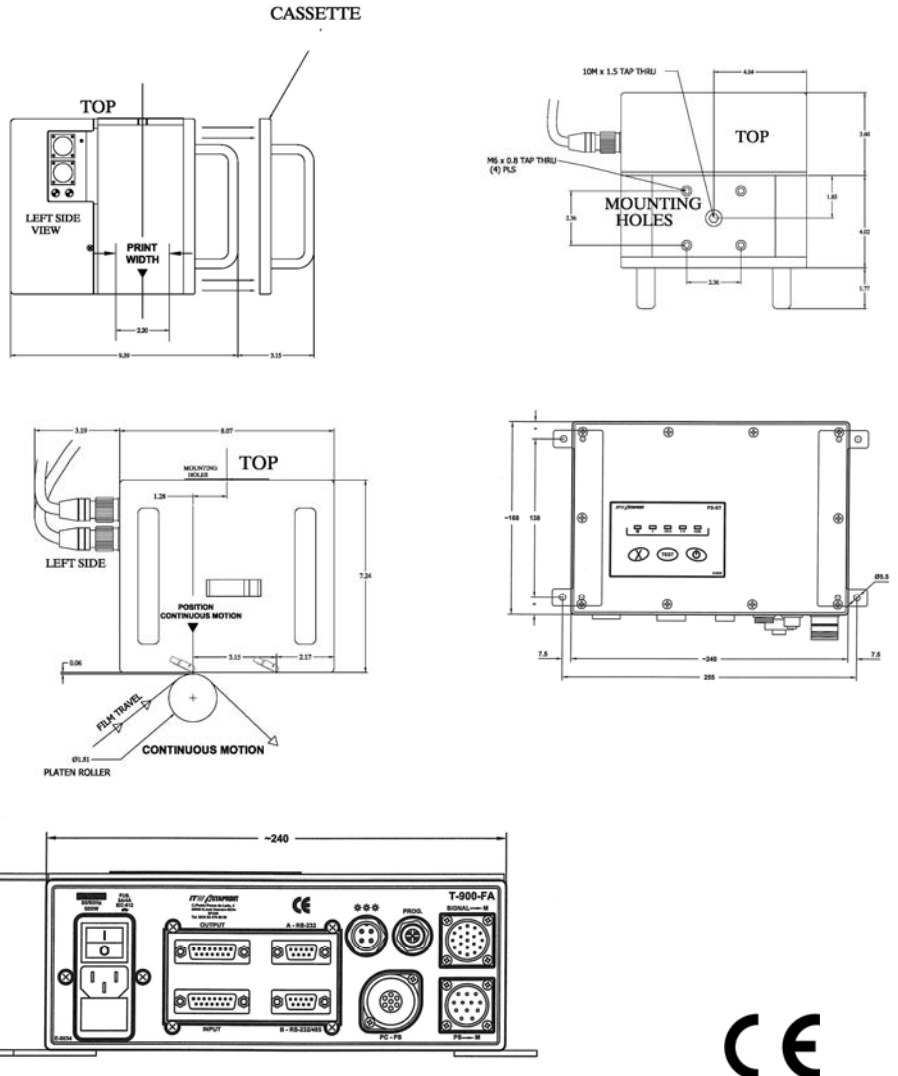
*Dependent on image size and print to substrate compatibility

Ribbon

Up to 600 meter (1970' roll)

Functions

- Fixed and/or variable text
- Full clock and calendar functions
- Graphics
- Lines and frames
- 0, 90, 180, 270 fields/image rotation
- Shift codes
- Serialization (up/down)
- Printer resident variables
- Paragraphs
- Database (import user data)
- Multi-language interface support



Text

Four (4) resident fonts
Ability to upload 4 user selected fonts
6...72 point font size (scalable in width)

Bar Codes

RSS14, RSS14 truncated, RSS14 limited, RSS14 stacked,
RSS14 stacked omni-directional, EAN-8, EAN-13, EAN-128,
CODE 128, CODE 39, 1-2 of 5, Code 93, DUN 14, ISBN, UPC-A
Datamatrix, FNC1 + Datamatrix ISBN

Connectivity

RS-232 (PC), USB, Ethernet

Modes of Operation

PR4 color touch screen operator interface
PR5 handset operator interface
Remote image loading with memory card
Optional—3 tier light tower

Outputs

Printer ready/not ready
Low ribbon
Broken ribbon/ribbon out
Cassette out



Pricing and specifications are subject to change.



Norwood Marking Systems, A Division of ITW
2538 Wisconsin Avenue
Downers Grove, IL 60515
Phone: (630) 968-0646
Toll Free: (800) 626-3464
Fax: (630) 968-7672

www.itwnorwood.com